



AUTHORISED DEALER OF

JSL 
J I N D A L S T A I N L E S S

www.abhaysteels.com

About Us

We are an ISO certified company.

Abhay Steels came into limelight in 1983 to offer sheet, coils & plates. We offer quality stainless steel sheets produced by Jindal which is one of biggest brand in India. We offer material with Mill Test Certificate (MTC) or Mill Test Reports (MTR) for all stainless sheets.

Our company has many years experience and specializes in manufacturing, selling, supplying and exporting sheets, plates, coils, round bars, flat, patta/patti for various purposes, and in engineering department, agricultural industry, construction industry of various domestic and foreign manufacturers.

Certificates



QUALITY PRODUCTS

We are buying all our products from well-known manufacturer with well known brand.

TIMELY DELIVERY

We are having facility and tie-up with local and international shipping for Timely Delivery.

INDUSTRY EXPERIENCE

We have in this industry from 1983. We are preferred partner / authorized distributor for Jindal Stainless Ltd. Sheets, Plates, Coils form past 8 years

BRILLIANT TEAM

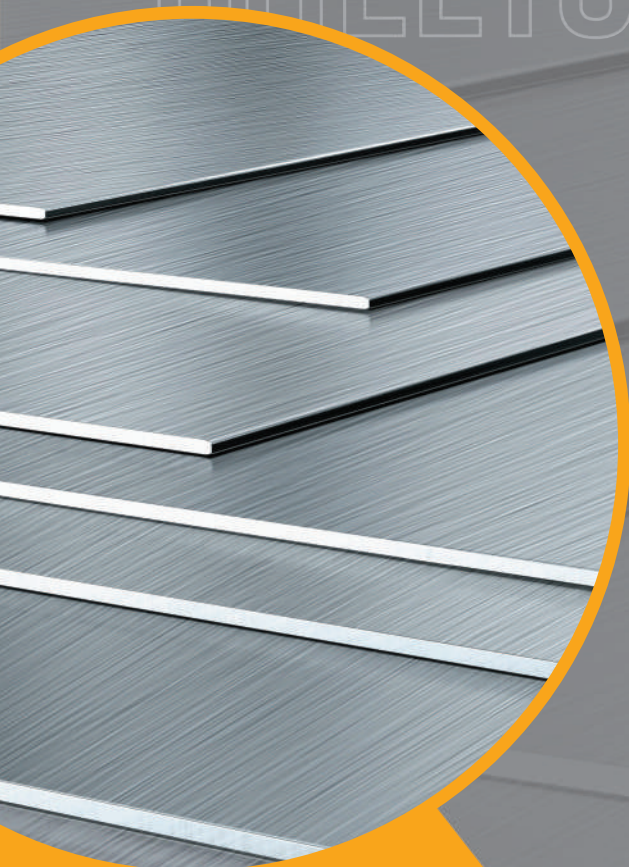
We have best staff and they Maintain good relationship with the best people in steel business.



100% CUSTOMER SATISFACTION

To achieve maximum customer satisfaction and set highest standards in manufacturing, product development and all other domains of our business.

SHEETS



SHEETS

Stainless Steel

202, 304, 304L, 316L, 321, 310s, 430, 409, 409L, 409M, 441

Thickness 0.5 mm - 5.00 mm

Standard Size 1000 mm x 2000 mm,
1250 mm x 2500 mm
1500 mm x 3000 mm

Finish 2B, N4PVC, HAIRLINE BA, NO.8

Customized size needs to be confirmed with us

PLATES

PLATES

Stainless Steel

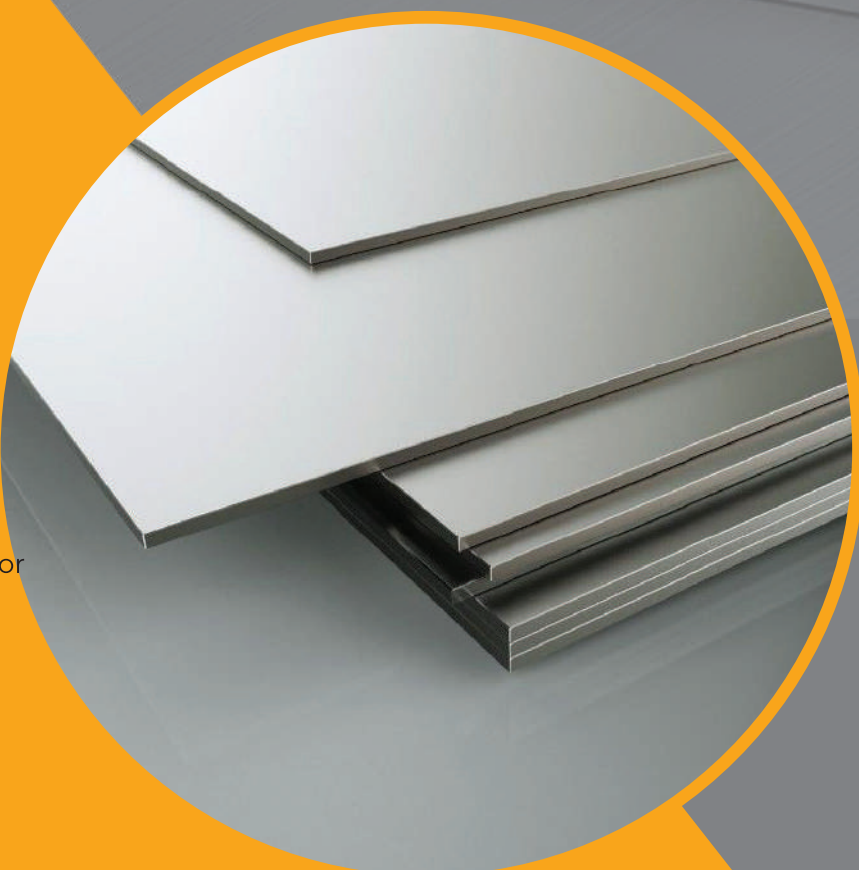
202, 304, 304L, 316L, 321, 310S, 430, 409, 409L, 409M

Thickness 3 mm to 150 mm

Width 1000 mm, 1250 mm,
1500 mm, 2000 mm

Length 2500 mm, 3000 mm,
5000 mm, 6000 mm or
as per requirement.

Finish No.1 & HR Finish



COIL

COIL

Stainless Steel

202, 304, 304L, 316L, 321, 310S, 430, 409,
409L, 409M, 410

Thickness	0.50 mm to 10 mm
Width	1000 mm, 1250 mm, 1500 mm, 2000 mm
Finish	2B / N4PVC / BA / NO.1
Standard	ASTM A240



SLITTING COIL



SLITTING COILS

Stainless Steel

202, 304, 304L, 316L, 321, 310S,
430, 409, 409L, 409M

Thickness	0.05 mm - 4 mm
Width	3.20 mm & above
Finish	2B / N4PVC / BA / NO.1

SHIMS



SHIMS

Stainless Steel

304, 316, 430

Thickness

0.05 MM thickness, 0.10 MM,

0.15 MM, 0.20 MM, 0.25 MM

0.30 MM, 0.35 MM, 0.40 MM

FLAT BARS PATTA, PATTI

FLAT BARS | PATTA | PATTI

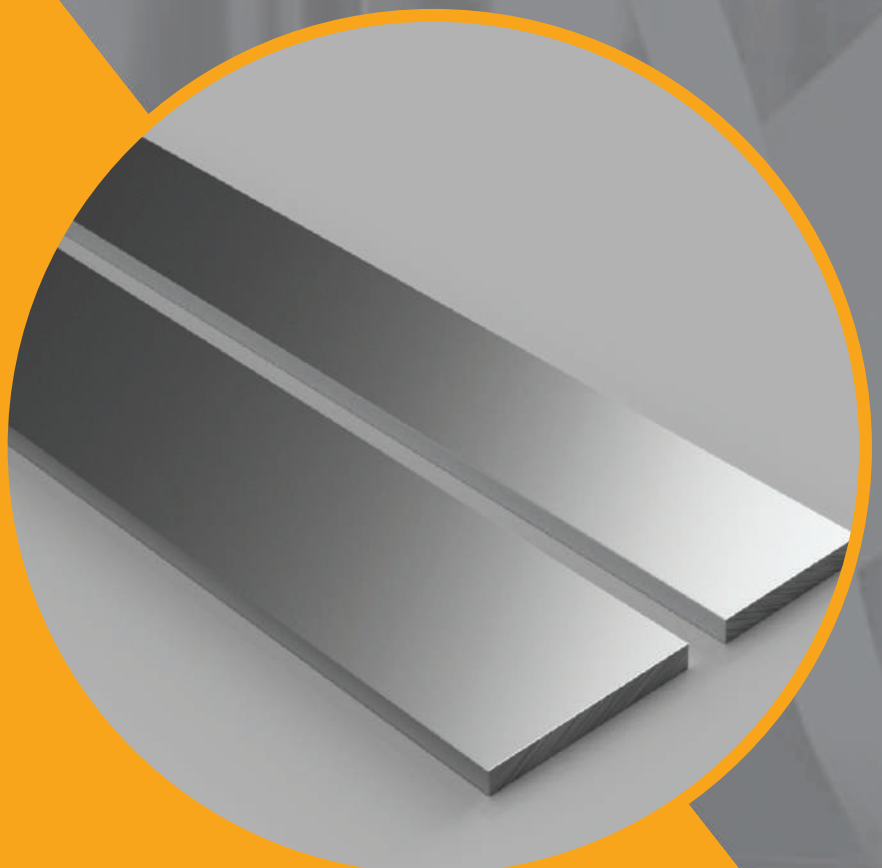
Stainless Steel

202, 304, 304L, 316, 316L

Thickness 3 mm to 50 mm

Width 8 mm to 150 mm

Finish CR & HR



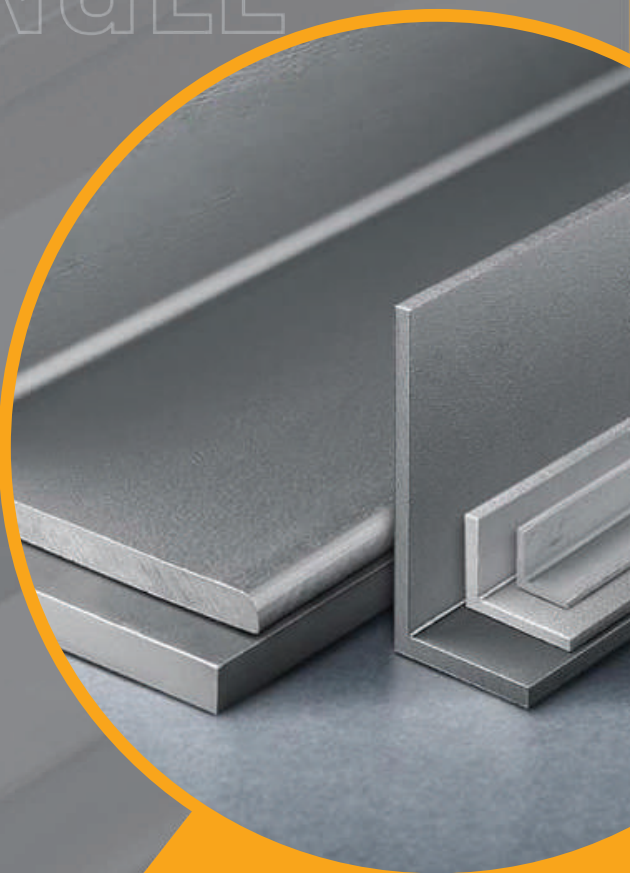
ANGLE

ANGLE

Stainless Steel

202, 304, 304L, 316, 316L

Thickness	3 mm to 12 mm
Width	20 mm x 20 mm to 150 mm x 150 mm
Finish	HR



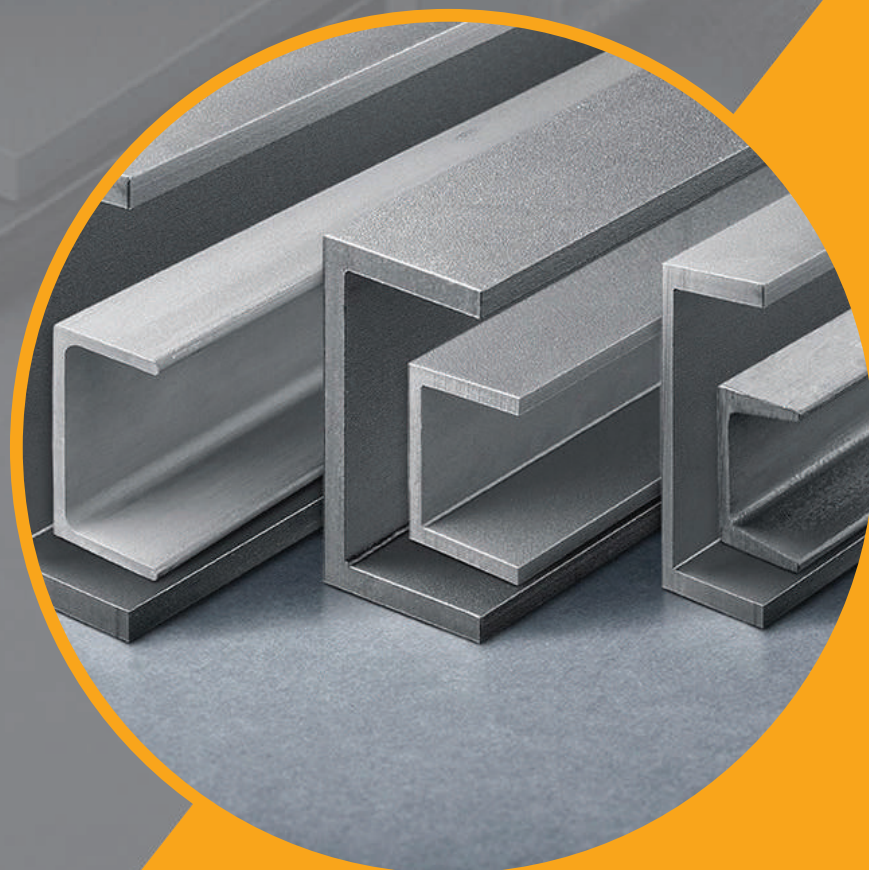
CHANNEL

CHANNEL

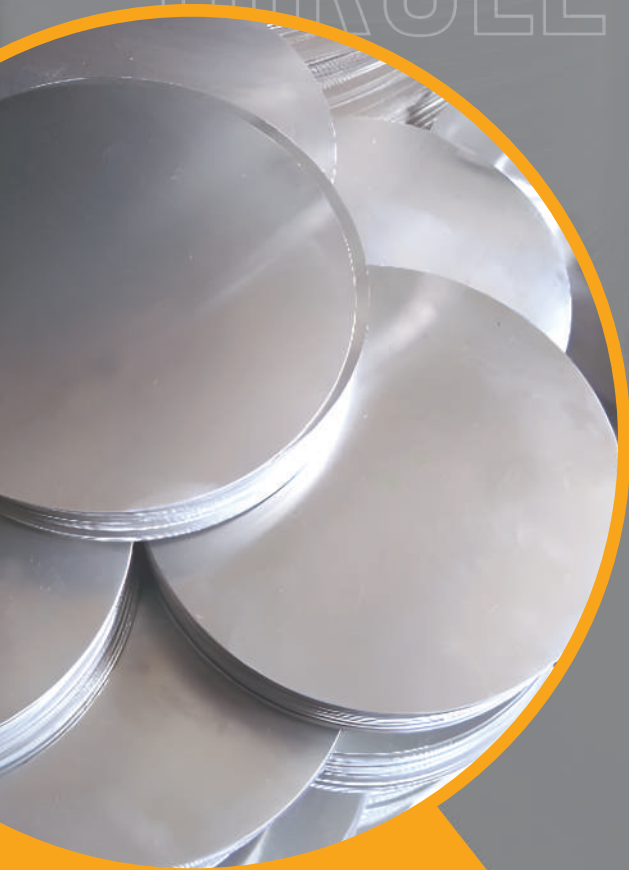
Stainless Steel

304, 304L, 316, 316L

Thickness	5 mm to 10 mm
Width	75 mm x 40 mm 80 mm x 40 mm 100 mm x 50 mm 150 mm x 40 mm 150 mm x 50 mm
Finish	HR, No.1



CIRCLE



CIRCLE

Stainless Steel

202, 304, 316

Thickness

1 mm to 100 mm

PERFORATED SHEET

PERFORATED SHEET

Stainless Steel

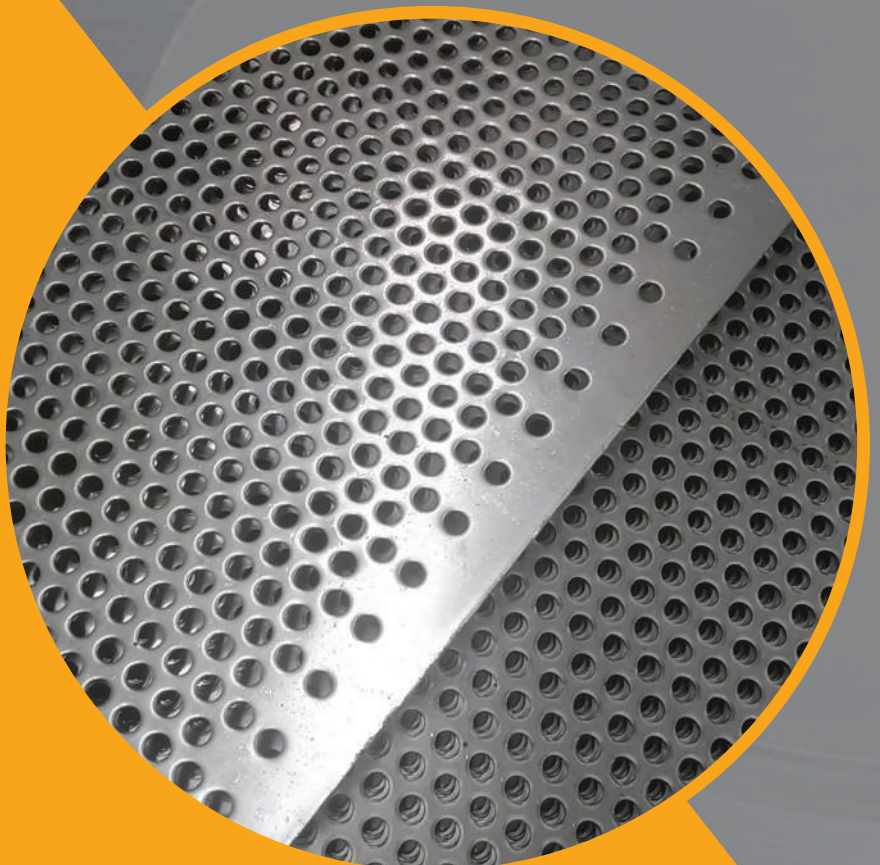
304, 304L, 310, 310S, 316, 316L,
321, 904L, 409, 409L, 409M,
410, 410S, 420, 430, 441

Thickness

0.3mm to 15mm

Width

1000mm to 2000mm
or customized



SPECIALIST IN 400 SERIES

SHEETS

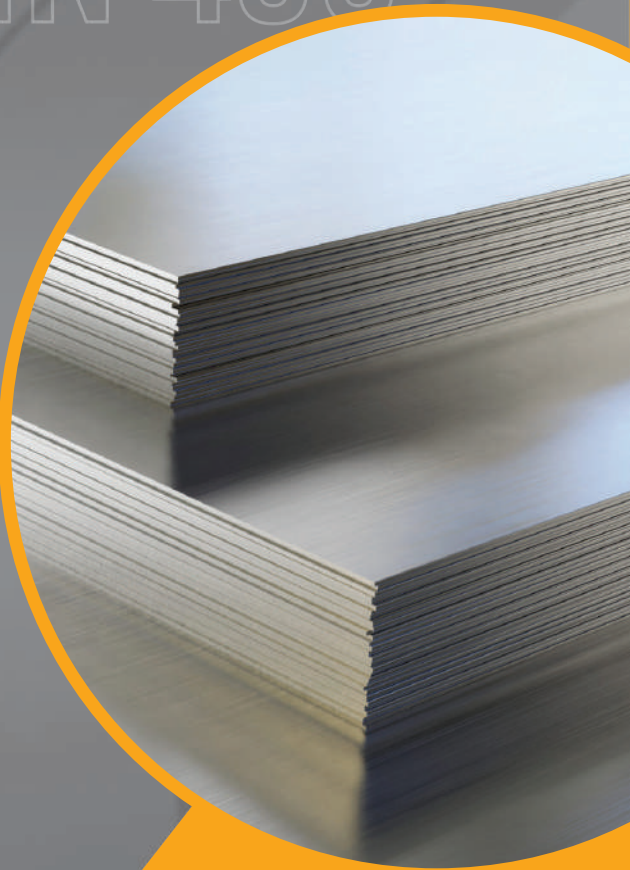
Grades

430, 409, 409L, 409M X2CrNi12, 441

Thickness 0.30 mm to 3.00 mm

Size 1000 mm x 2000 mm,
1250 mm x 2500 mm
1500 mm x 3000 mm & customized sizes

Finish 2B, BA, N4PVC, HAIRLINE



SHEET & COILS

COIL

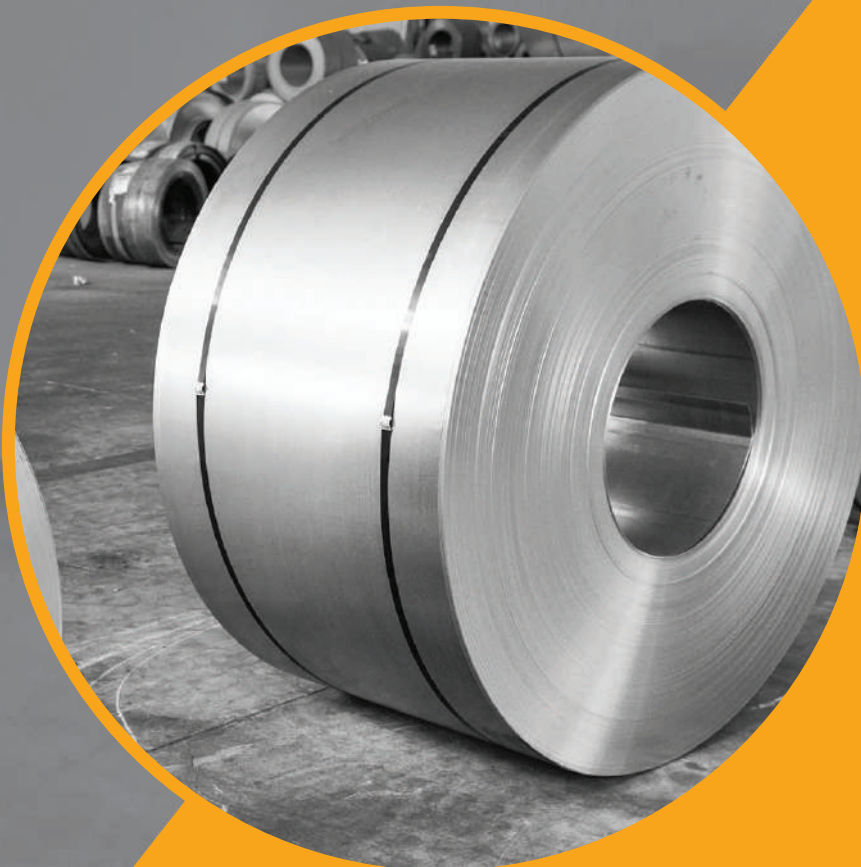
Grades

430, 409, 409L, 409M X2CrNi12, 441

Thickness 0.3 mm to 3 mm

Width 1000 mm, 1250 mm,
1500 mm, &
customized width

Finish 2B / N4PVC / BA / NO.1



Chemical Composition

CHEMICAL COMPOSITION								
	JSL Designation/ Grade	%C (Max)	%Mn (Max)	%P (Max)	%S (Max)	%Si (Max)	%Cr	%Ni
Austenitic Cr-Mn	J-201	0.15	5.5-7.5	0.060	0.030	1.00	16.00-18.00	3.50-5.50
	J-201L	0.030	5.5-7.5	0.045	0.030	0.75	16.00-18.00	3.50-5.50
	J-201LN	0.030	6.4-7.5	0.045	0.015	0.75	16.00-17.50	4.00-5.00
	J-202	0.15	7.5-10.0	0.060	0.030	1.00	17.00-19.00	4.00-6.00
	J-204Cu	0.10	6.5-9.0	0.060	0.010	0.75	16.00-17.50	1.50-3.50
	JSLAUS(J1)	0.08	6.0-8.0	0.070	0.010	0.75	16.00-18.00	4.00-6.00
	J-4	0.10	8.50-10.0	0.080	0.010	0.75	15.00-16.00	1.00-2.00
	JSL U DD	0.12	9.75-11.0	0.1	0.015	0.75	14.75-16.25	0.50-0.80
	JSL U SD	0.12	9.75-11.0	0.1	0.015	0.75	14.50-16.00	0.4-0.75
	JT	0.13	9.75-11.0	0.1	0.015	0.75	14.0-15.25	0.40 min
Austenitic Cr-Ni	J-301	0.15	2.00	0.045	0.030	1.00	16.00-18.00	6.00-8.00
	J-301L	0.030	2.00	0.045	0.030	1.00	16.00-18.00	6.00-8.00
	J-301LN	0.030	2.00	0.045	0.030	1.00	16.00-18.00	6.00-8.00
	J-304	0.07	2.00	0.045	0.030	0.75	17.50-19.50	8.00-10.50
	J-304H	0.04-0.10	2.00	0.045	0.030	0.75	18.00-20.00	8.00-10.50
	J-304L	0.030	2.00	0.045	0.030	0.75	17.50-19.50	8.00-12.00
	J-304LN	0.030	2.00	0.045	0.030	0.75	18.00-20.00	8.00-12.00
	J-30815	0.05-0.10	0.80	0.04	0.03	1.40-2.00	20.0-22.0	10.0-12.0
	J-309S	0.08	2.00	0.045	0.030	0.75	22.00-24.00	12.00-15.00
	J-310S	0.08	2.00	0.045	0.030	1.50	24.00-26.00	19.00-22.00
	J-316	0.08	2.00	0.045	0.030	0.75	16.00-18.00	10.00-14.00
	J-316L	0.030	2.00	0.045	0.030	0.75	16.00-18.00	10.00-14.00
	J-316LN	0.030	2.00	0.045	0.030	0.75	16.00-18.00	10.00-14.00
	J-316Ti	0.08	2.00	0.045	0.030	0.75	16.00-18.00	10.00-14.00
	J-317	0.08	2.00	0.045	0.030	0.75	18.00-20.00	11.00-15.00
	J-317L	0.030	2.00	0.045	0.030	0.75	18.00-20.00	11.00-15.00
	J-317LN	0.030	2.00	0.045	0.030	0.75	18.00-20.00	11.00-15.00
	J-31727	0.030	1.00	0.030	0.030	1.00	17.50-19.00	14.50-16.50
	J-321	0.08	2.00	0.045	0.030	0.75	17.00-19.00	9.00-12.00
	J-347	0.08	2.00	0.045	0.030	0.75	17.00-19.00	9.00-13.00
	J-904L	0.02	2.00	0.05	0.04	1.00	19.0-23.0	23.0-28.0
Martensitic	J-410	0.08-0.15	1.00	0.040	0.030	1.00	11.50-13.50	0.75 max
	J-415	0.05	0.50-1.00	0.030	0.030	0.60	11.50-14.00	3.50-5.50
	J-420	0.15 min	1.00	0.040	0.030	1.00	12.00-14.00	0.75 max
	J-420J1	0.16-0.25	1.00	0.040	0.030	1.00	12.0-14.0	0.6
	J-420J2	0.26-0.40	1.00	0.040	0.030	1.00	12.0-14.0	0.6
	J-420MoV	0.45-0.55	1.00	0.040	0.015	1.00	14.0-15.0	-
	J-431	0.20	1.00	0.040	0.030	1.00	15.00-17.00	1.25-2.50
	JBS	0.6-0.7	1.00	0.028	0.020	0.75	12.50-13.50	-
Ferritic	J-405	0.08	1.00	0.040	0.030	1.00	11.50-14.50	0.60
	J-409	0.030	1.00	0.040	0.020	1.00	10.50-11.70	0.50 max
	J-409L	0.030	1.00	0.040	0.020	1.00	10.50-11.70	0.50 max
	J-409Ni	0.030	1.00	0.040	0.030	1.00	10.5-11.7	0.50-1.00
	J-410S	0.08	1.00	0.040	0.030	1.00	11.50-13.50	0.60 max
	J-430	0.12	1.00	0.040	0.030	1.00	16.00-18.00	0.75 max
	J-430Ti	0.030	1.00	0.040	0.030	1.00	16.00-19.00	-
	J-432	0.025	1.00	0.040	0.030	1.00	17.0-20.0	-
	J-436	0.120	1.00	0.040	0.030	1.00	16.00-18.00	-
	J-436L	0.025	1.00	0.040	0.030	1.00	16.00-19.00	-
	J-439	0.030	1.00	0.040	0.030	1.00	17.00-19.00	0.50 max
	J-441	0.030	1.00	0.040	0.015	1.00	17.50-18.50	-
	J-444	0.025	1.00	0.040	0.030	1.00	17.5-19.5	1.00
	J-446	0.20	1.50	0.040	0.030	1.00	23.0-27.0	0.75
Ferritic + Martensitic								
	J-409M	0.030	0.8-1.5	0.030	0.030	1.00	10.50-12.50	1.50 max
Duplex (Austenitic+Ferritic)								
	J-2205	0.030	2.00	0.030	0.020	1.00	22.00-23.00	4.50-6.50
	J-2304	0.030	2.50	0.040	0.030	1.00	21.50-24.50	3.00-5.50
	J-32101*	0.040	4.00-6.00	0.040	0.030	1.00	21.0-22.0	1.35-1.70

*For <5mm, as per ASTM 2480

Mechanical Properties

					MECHANICAL PROPERTIES			
	JSL Designation/ Grade	%Mo	N PPM (Max)	% Others	Tensile Strength MPa (min)	Yield Strength MPa (min)	% Elongation (min)	Hardness Rockwell B (max)
Austenitic Cr-Mn	J201	-	2500	-	655	310	40	100
	J201L	-	2500	-	655	310	40	100
	J201LN	-	1000-2500	Cu = 1.0 Max.	655	310	45	100
	J202	-	2500	-	620	260	40	100
	J204Cu	-	1000-2500	Cu = 2.0-4.0	620	310	40	100
	JSLAUS (J1)	-	1000	Cu = 1.5-2.0	550	205	40	95
	J4	-	2000	Cu = 1.5-2.0	650	325	40	100
	JSL U DD	-	-	Cu=1.75-2.50 / N=0.2 Max.	700	350	40	100
	JSL U SD	-	-	Cu=1.00-1.50 / N=0.2 Max.	700	350	40	100
	JT	-	-	Cu=0.40-1.00 / N=2000	700	350	40	100
Austenitic Cr-Ni	J-301	-	1000	-	515	205	40	95
	J-301L	-	2000	-	550	220	45	100
	J-301LN	-	700-2000	-	550	240	45	100
	J-304	-	1000	-	515	205	40	92
	J-304H	-	-	-	515	205	40	92
	J-304L	-	1000	-	485	170	40	92
	J-304LN	-	1000-1600	-	515	205	40	95
	J-30815	-	1400-2000	Ce=0.03-0.08	600	310	40	95
	J-309S	-	-	-	515	205	40	95
	J-310S	-	-	-	515	205	40	95
	J-316	2.00-3.00	1000	-	515	205	40	95
	J-316L	2.00-3.00	1000	-	485	170	40	95
	J-316LN	2.00-3.00	1000-1600	-	515	205	40	95
	J-316Ti	2.00-3.00	1000	Ti=5X(C+N) Min., 0.70 Max.	515	205	40	95
	J-317	3.00-4.00	1000	-	515	205	35	95
	J-317L	3.00-4.00	1000	-	515	205	40	95
	J-317LN	3.00-4.00	1000-2200	-	550	240	40	95
	J-31727	3.80-4.50	1500-2100	Cu=2.8-4.0	550	245	35	96
	J-321	-	1000	Ti=5X(C+N) Min., 0.70 Max.	515	205	40	95
	J-347	-	-	Nb=10XC Min., 1.00 Max.	515	205	40	92
Martensitic	J-904L	4.00-5.00	1000	Cu=1.00-2.00	490	220	35	90
	J-410	-	-	-	450	205	20	96
	J-415	0.50-1.00	-	-	795	620	15	32rc
	J-420	0.50 max	-	-	690	-	15	96
	J-420J1	-	-	-	520	225	18	97
	J-420J2	-	-	-	540	225	18	99
	J-420MoV	0.50-0.80	-	V=0.10-0.20	850 max	-	12	100
	J-431	-	-	-	-	-	-	29rc
Ferritic	JBS	-	-	-	-	-	-	-
	J-405	-	-	Al=0.10-0.30	415	170	20	88
	J-409	-	300	Ti=6X (C+N) Min.,0.5 Max., Cb=0.17 Max.	380	170	20	88
	J-409L	-	300	Ti=6X (C+N) Min., 0.75 Max.	380	170	20	88
	J-409Ni	-	300	Ti=6X(C+N) Min, 0.75 Max	415	275	20	92
	J-410S	-	-	-	415	205	22	89
	J-430	-	-	-	450	205	22	89
	J-430Ti	-	-	Ti=0.10-1.00	360	175	22	90
	J-432	0.40-0.80	250	Ti/Nb=8X(C+N) Min, 0.80 Max	410	245	20	96
	J-436	0.75-1.25	-	Nb=5XC Min., 0.70 Max.	450	240	22	89
	J-436L	0.75-1.50	250	% Nb or & Ti or % combination = 8X (C+N) Min., 0.80 Max.	410	245	20	96
	J-439	-	300	Ti=0.20+4X (C+N) Min., 1.10 Max. Al=0.15 Max.	415	205	22	89
	J-441	-	-	Nb=3X% C+0.3 Min. 1% Max., T1=0.1-0.6%	430	250	18	88
	J-444	1.75-2.50	350	(Ti+Nb) 0.20+4(C+N) Min, 0.80 Max	415	275	20	96
	J-446	-	2500	-	515	275	20	96
Ferritic + Martensetic								
	J-409M-		300	Ti=0.75 Max.	450	275	20	90
Duplex (Austenitic + Ferritic)								
	J-2205	3.0-3.50	1400-2000	-	655	450	25	31rc
	J-2304	0.05-0.60	500-2000	Cu0.05 Min.-0.60 Max.	600	400	25	32rc
	J-32101*	0.10-0.80	0.20-0.25	Cu 0.10 - 0.80	700	530	30	31hrc

Grades other than these can also be manufactured. Specific chemical and mechanical properties can also be supplied by mutual agreement.

Contact Us



OFFICE ADDRESS

3rd Khetwadi, Lifescapes
Harihar, 2nd Floor, Office no 13,
Mumbai - 400004, India



WAREHOUSE ADDRESS
Plot No.1424, Road No.27,
Kalamboli Steel Market,
Panvel:-410218, India



SHOP ADDRESS

3rd Kumbarwada,
91/95 Mukund Bhavan, Ground
Floor, Mumbai 400004, India



Sales@abhaysteels.com



+91 022 6639 3691 / +91 022 6615 7075



www.abhaysteels.com